



RIC Messenger

Boone, Clay, Kanawha, Putnam Counties

A publication of the B-C-K-P Regional Intergovernmental Council

Winter 2023



Chairman Fletcher's Message

Winter is Here! I hope everyone is ready for the cold weather! The RIC staff continues to be tremendously busy and diligently working throughout our region on numerous projects. I would like to take this opportunity to provide an update on RICs projects and accomplishments over the past few months.

Community Development News

In **Boone County**, the RIC community development staff has begun administering the Boone Memorial Hospital Sustainable Living Greenhouse Grant as well as the Boone County Community and Economic Development Broadband Grant for the Rock Creek Development Park. In **Clay County**, the Clay County Commission received a \$1.73 million HUD Community Development Block Grant (CDBG) award for the Big Otter/Nebo/Walker Road Waterline Extension. In **Kanawha County**, the RIC community development staff assisted Yeager International Airport with a U.S. Economic Development Administration (EDA) grant application. The RIC community development staff also began administration of the Congressional Directed Spending Sanitary Storm Sewer project for the Town of Marmet. In addition, the RIC community development staff provided environmental clearances for the Kanawha-Charleston Housing Authority and the South Charleston Housing Authority. In **Putnam County**, the RIC community development staff assisted in the formulation of a Strategic Planning Grant for the Putnam County Development Authority. In the **Region**, the RIC community development staff continues to supply information for applications to the WV Community Advancement and Development office for HUD Mitigation and Disaster Recovery Grant applications in Clay and Kanawha counties. The RIC community development staff developed WV Infrastructure Critical Needs Projects for East Bank, Clay Roane PSD, Sissonville PSD, the Town of Clay, and the Putnam County Commission. In addition, the RIC community development staff is developing HUD and Appalachian Regional Commission (ARC) applications for the communities that qualify. Furthermore, FEMA approved the **Region 3 Hazard Mitigation Plan** update. All municipalities will need to provide a signed resolution adopting the plan. A RIC staff member can assist if needed.

Transportation News

The RIC transportation staff completed the update for the **Public Participation Plan** and the **Title VI Plan**. In addition, the RIC transportation staff working in conjunction with Burgess and Niple to complete the **Road Safety Assessments** project for five study locations throughout Kanawha and Putnam counties. The RIC transportation staff also partnered with Dr. Ronald Eck of the WV Local Technical Assistance Program (WV LTAP) to host the “**ADA for Local Governments**” training on September 22, 2022. This was a beneficial training for local government entities and public works departments. Contact Kelsey Tucker if you are interested in learning more information on these training opportunities. RIC transportation staff recently completed a sidewalk inventory for the City of Chesapeake and are assisting several other municipalities in the region with technical assistance through community walking audits, sidewalk inventories, and ADA Transition Plan development. Furthermore, the RIC transportation staff is developing a **transportation safety plan** for Kanawha and Putnam counties. Once complete, this plan will satisfy the compliance requirements of a safety action plan under the new U.S. DOT Safe Streets and Roads for All (SS4A) program. A **public survey** was developed to identify transportation safety concerns in Kanawha and Putnam counties as part of the plan's development. The public survey is open now through **February 17, 2023** and can be accessed at the following link: <https://forms.office.com/r/7CCefkhSEF> Lastly, the RIC transportation staff, in cooperation with the WV Department of Transportation (WVDOT), Kanawha Valley Regional Transportation Authority (KVRTA), and the WV Division of Public Transit, developed and adopted updated **Performance Targets** to support performance-based transportation planning.

I look forward to meeting with everyone at our **March 9, 2023** annual meeting as we work together as a team to promote local communities, regional solutions, and statewide impacts.

David Fletcher
Chairman

Upcoming RIC Meetings

March 9, 2023

June 8, 2023

September 14, 2023

December 14, 2023

All meetings will be held at 12:00 Noon at the West Virginia Regional Technology Park, pending any changes due to public health conditions. We will continue to offer a virtual option as well.

Welcome New RIC Board Members

- Andrew Dunlap, Charleston Area Alliance
- Commissioner Brett Kuhn, Boone County Commission
- Russell Saunders, BridgeValley Community & Technical College

Sign-up to Join the RIC Email List

If you would like to receive information about upcoming events and opportunities, sign up to join our email list at <http://eepurl.com/dH-hyj>

Public Survey Now Open!

We can all play a significant role to improve safety on local roadways.

Did you know?

- *On average, 1 person dies or is significantly injured in the Kanawha-Putnam region every two days as a result of roadway crashes.*
- *Kanawha County has the highest percentage of fatal and serious injury crashes at intersections & severe pedestrian crashes than any other county in WV.*



With the goal of reducing and ultimately eliminating fatalities and serious injury crashes on roadways in Kanawha and Putnam counties, the Regional Intergovernmental Council (RIC), in coordination with State and local agencies, is leading the development of a plan to identify strategies and data-driven improvements to increase transportation safety for all users of the region's roadways.

To best inform this critical effort, your input is needed. A public survey is being conducted now through February 17, 2023 to solicit and identify transportation safety concerns in Kanawha and Putnam counties. Local residents and other interested persons are strongly encouraged to participate. The public survey may be accessed at the following link: <https://forms.office.com/r/7CCefkhSEF>

You can help by sharing the public survey with others!

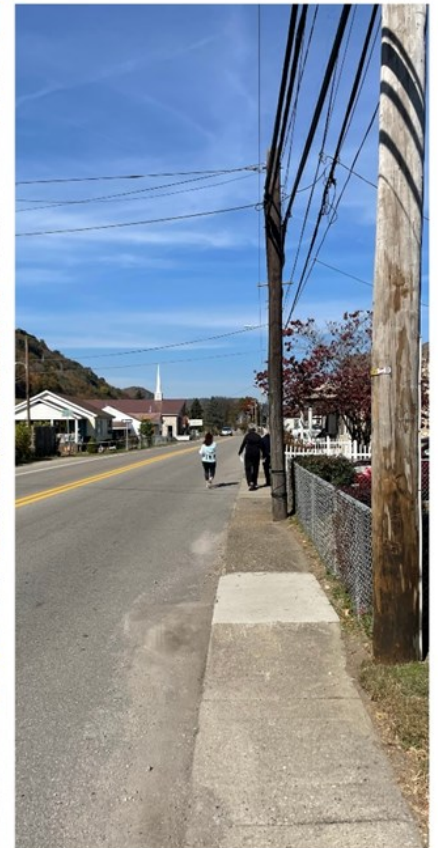
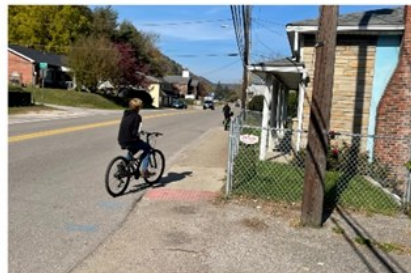
Member Municipalities Continue to Participate in RIC's ADA Transition Plan Assistance Program

Local governments in Kanawha and Putnam Counties are developing ADA Transition Plans with the assistance of the RIC Transportation Team through the goal of achieving greater ADA compliance. The process includes participating municipalities conducting a self-evaluation of their current services, policies, and practices that do not meet ADA guidelines. (28 CFR § 35.105)

This includes a community's public rights-of-way, also known as the pedestrian access route, that is usually defined by a curbed sidewalk, though a pedestrian access route may exist where there is no sidewalk. RIC's Transportation Team provides technical assistance, training, and resources to identify areas of noncompliance in the public rights-of-way. The results of the self-evaluation are collected in a manner that allows those results to be displayed in an online map that will be linked to the ADA Transition Plan and available for the public to view.

The City of Chesapeake's self-evaluation was recently completed with the assistance of RIC and the West Virginia Local Technical Assistance Program (WV LTAP). Additionally, the City of Chesapeake utilized RIC's assistance to host a community walk audit. At the walk audit, community members and leaders tested the pedestrian infrastructure for the entire length of the town. Community members filled out an evaluation survey and submitted written and oral comments that can serve to guide project prioritization as the plan is drafted.

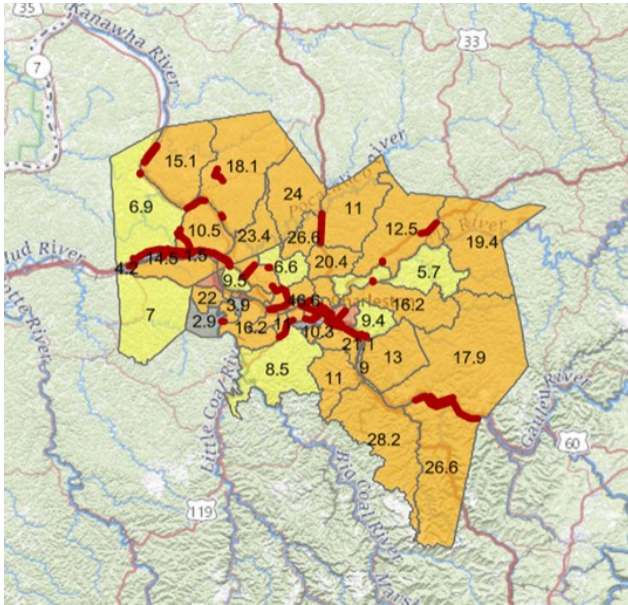
RIC's Americans with Disabilities Act (ADA) Transition Plan Assistance Program participants can expect to see sidewalk self-evaluations complete, and ADA Transition Plans drafted, within the coming months. Current participants in addition to the City of Chesapeake, include the Town of Belle, the Town of Pratt, the Town of Cedar Grove, and the Town of Poca. Any additional municipalities interested in participating in the RIC ADA Transition Plan Assistance Program may contact the RIC Transportation Team by phone (304) 744-4258 or by email at mail@wvregion3.org.



RIC Transportation Team Member, Jake Smith, walks with community members and collects oral comments during a discussion. Children play on bicycles. Community members walk as a form of exercise.

GIS-based Capabilities in Transportation Planning

Geographic Information System (GIS) refers to a spatial system that creates, manages, analyzes, and maps all types of data. The RIC transportation staff utilizes GIS-based software for various transportation planning work tasks and projects. The primary uses of GIS-based applications by the RIC transportation staff include data collection, data analyzation, and mapping.



Since the inception of GIS capabilities, GIS-based technology has drastically expanded, enabling users to perform a plethora of tasks with extensive usability. These tasks vary in purpose and complexity, spanning from simple mapping projects to more complex data analyzation and geospatial technologies.

GIS software is used in many RIC transportation planning activities and projects. For example, ArcGIS software allows users to integrate data for the creation of maps and other visualization methods. This software offers additional functions for use in transportation fieldwork activities.

The following ArcGIS applications are utilized by the RIC transportation staff for fieldwork activities:

- *Field Maps* is a data collection application that can be used during fieldwork activities for compiling limitless amounts of potential data points. For reference, the RIC transportation staff has used this application to capture ADA deficiencies pinpoint locations of sidewalks and utility infrastructure.
- *QuickCapture* is another application used for data collection. As compared to *Field Maps*, which focuses on high-level detail, *QuickCapture* functions on quick and simplistic data collection. This application allows a single touch from a mobile device to mark and/or photograph a specific point or item.
- *Workforce* is an application used by data collectors to track and log specific work tasks. For example, *Workforce* allows users to set up a prompt and assign it to a field operator. The field operator would then be able to go out and perform the task whilst displaying task progression in real time.
- *Dashboard* is an application that functions as a hub for the above-referenced applications. *Dashboard* allows users to integrate maps with *Field Maps*, *QuickCapture*, and *Work Force* applications all within the same interface. This allows for information to be displayed and organized in a clear and concise space.
- Lastly, RIC transportation staff uses the *CityEngine* auxiliary application through ArcGIS. *CityEngine* is an advanced 3D modeling software for users to create and showcase renderings of infrastructure designs in the built environment.

The wide variation of GIS-based software in RIC's transportation planning efforts brings exciting potential for municipalities throughout the region. To learn more about the GIS-based services RIC can provide, please contact us by phone at (304) 744-4258 or by email at mail@wvregion3.org.

Winter Driving Tips

Before You Go

Stock Your Vehicle

Carry items in your vehicle to handle common winter driving-related tasks, and supplies you might need in an emergency, including:

- a snow shovel, broom, and ice scraper;
- abrasive material (sand or kitty litter), in case your vehicle gets stuck in the snow;
- jumper cables, flashlight, and warning devices (flares and emergency markers);
- blankets for protection from the cold; and
- a cell phone and charger, water, food, and any necessary medicine.



Gas Up or Plug It In

Keep your gas tank close to full whenever possible.

For electric and hybrid-electric vehicles, decrease the drain on the battery. In general, lithium ion batteries have reduced energy at lower temperatures. Additionally, most all vehicle batteries will use battery power for self-heating in low temperatures. The battery drain due to heating can be minimized by keeping your electric vehicle as warm as possible during freezing temperatures. A common way to do this: plug your vehicle in at night during the winter, keeping the battery temperature in its optimal ranges.

Plan Your Route

Before heading out, make sure to check the weather, road conditions and traffic. Familiarize yourself with directions and maps before you go—even if you use a GPS—and let others know your route and anticipated arrival time. On longer trips, plan enough time to stop to stretch, get something to eat, check your phone, and change drivers or rest if you feel drowsy.

Year-Round Safety

Check for Recalls

Go to [NHTSA.gov/Recalls](https://www.nhtsa.gov/Recalls) and enter your vehicle identification number (VIN) to quickly learn if your vehicle has a critical safety issue that has not been repaired, and how to get that repair done for free. You can also download NHTSA's SaferCar app ([NHTSA.gov/app](https://www.nhtsa.gov/app)) and enter your vehicle and equipment information. If a recall is issued, you'll get an alert on your phone.

Avoid Risky Driving Behaviors

You know the rules: Do not text or drive distracted; obey posted speed limits; and always drive sober. Both alcohol and drugs can impair safe and responsible driving by affecting things such as coordination, judgment, perception, and reaction time. And remember: always wear your seat belt.



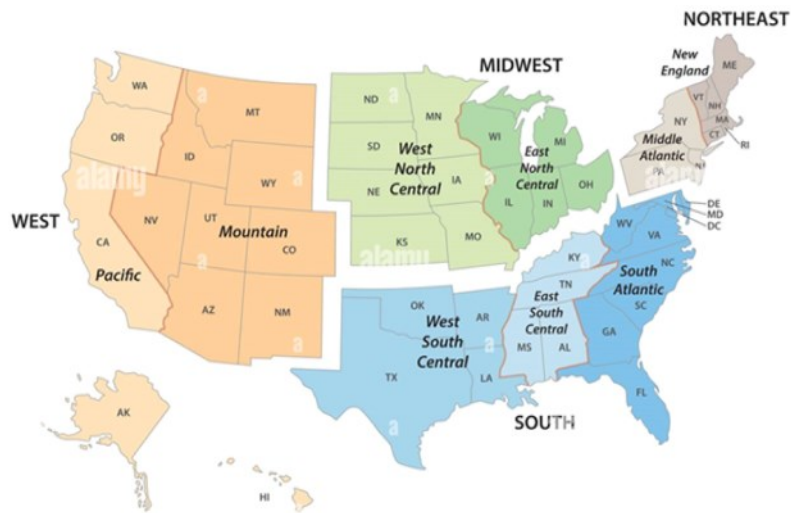
U.S. Department of Transportation
National Highway Traffic Safety
Administration

[NHTSA.gov/WinterDrivingTips](https://www.nhtsa.gov/WinterDrivingTips)



15754a-111022-v1

Census Bureau-designated regions and divisions



alamy

Image ID: 26833YM
www.alamy.com

Happy New Year!

2023

New Year's Day
U.S. population:

334,233,854

World population:

7,942,645,086

United States[®]
Census
Bureau

U.S. Department of Commerce
U.S. CENSUS BUREAU
[census.gov](https://www.census.gov)

Note: Population estimates as of Jan. 1, 2023.
Source: Vintage 2022 Population Estimates and
International Database

*Regional Intergovernmental Council
315 D Street
South Charleston, WV 25303*



Upcoming RIC Meeting

March 9, 2023 - 12:00 Noon

*Regional Intergovernmental Council
315 D Street, South Charleston, WV 25303
Phone: (304) 744-4258; Fax: (304) 744-2534
Website: www.wvregion3.org · Email: mail@wvregion3.org*

*Chairman: David Fletcher
Executive Director: Colt Sandoro*

Newsletter prepared by Joanna Keller

*The preparation of this newsletter is financially aided by grants from the Economic
Development Administration, the U. S. Department of Transportation and the
Appalachian Regional Commission.*

Local Communities / Regional Solutions / Statewide Impacts